

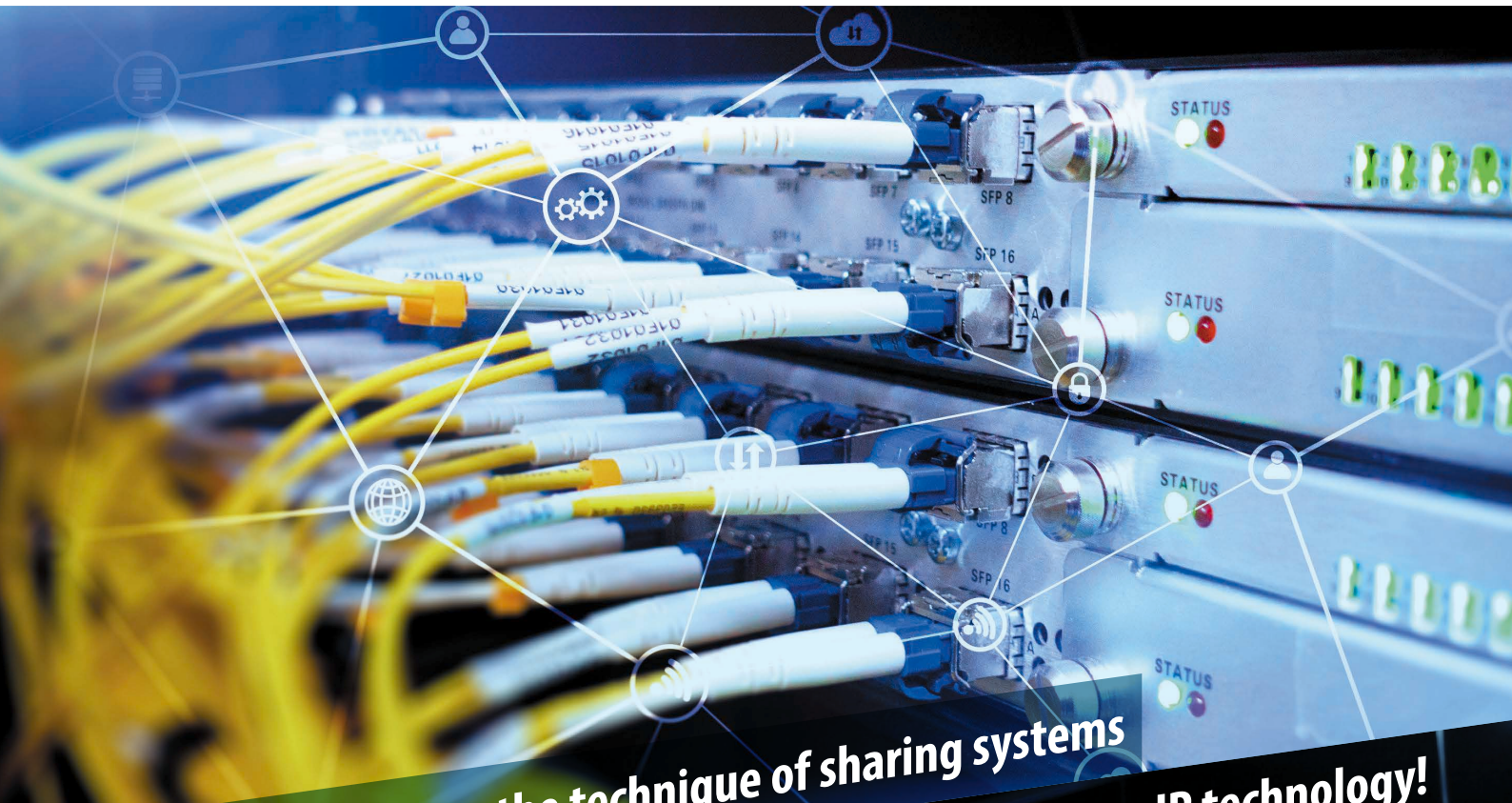
Broadmedia & Entertainment

# Inter BEE 2023

Makuhari Messe: 11.15  17 

Information on Participation  
in the IP Collaboration WG

## INTER BEE PAVILION



Experience hands-on the technique of sharing systems  
between affiliated stations with media over IP technology!



    #interbee2023

[www.inter-bee.com](http://www.inter-bee.com)



# INTER BEE IP PAVILION

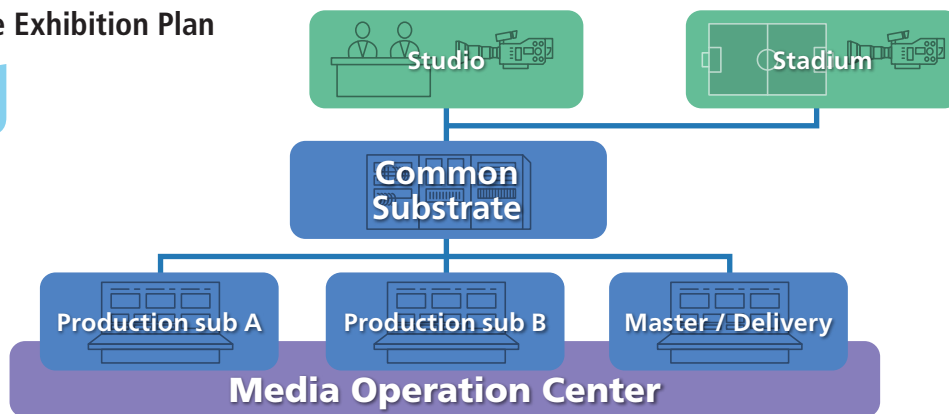
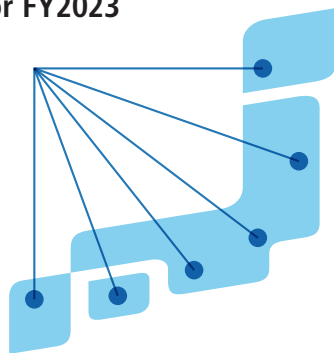
## Information on Participation in the IP Collaboration WG

### Proposing the Possibilities of IP Transmission with Collaboration That Transcends the Boundaries between Companies

#### ■ Overview

We are seeking companies to participate in the planning consideration, advance preparations and booth deployment for INTER BEE IP PAVILION. We set up the IP PAVILION so that it is built with the broadcasting systems necessary in broadcasting stations with the minimum required multi-vendor equipment. We will build the systems with an awareness it will be used between affiliated stations in addition to in broadcasting stations and then propose the technique of sharing systems by fully utilizing media over IP technology this time. Our aim is to deploy booths which will lead to providing hands-on experiences.

#### Conceptual Diagram of the Exhibition Plan for FY2023



#### ■ Participation Requirements

- Companies/organizations which can participate from the planning consideration stage and which will promote the project upon a division of roles
- Companies/organizations which can provide equipment that actually works, explanatory panels and personnel for the actual machine connection demo in the IP PAVILION

\*If you wish to exhibit equipment, you can exhibit only equipment related to one of ST2110, ST2059 or NMOS and which actually works under certain conditions.

#### ■ Outline

Name: INTER BEE IP PAVILION  
Period: [Makuhari Messe] November 15 (Wed) ~ 17 (Fri)  
[Online] November 6 (Mon) ~ December 15 (Fri)  
Venue: Exhibition Hall, Makuhari Messe  
Admission: Free (Registration required)

#### ■ Operation schedule

We will hold meetings mainly remotely on a periodic basis.

Early July	▶ Final decision on participants
Early October	▶ Advance verification Distribution of letters of invitation to Inter BEE 2023 Distribution of exhibitor badges and loading/unloading vehicle passes
November 13 (Mon)	▶ Unloading and preparations (Makuhari Messe)



※Photo of Inter BEE 2022

- ◆ **Participating Companies/Organizations:** ASACA CORPORATION / ASTRODESIGN, Inc. / IKEGAMI TSUSHINKI CO., LTD. / Intelligent Wave Inc. / HC Networks, Ltd. / NEC Corporation / NTT Electronics Corporation / Cisco Systems G.K. / Japan Material Co.,Ltd. / SEIKOH GIKEN Co.,Ltd. / Seiko Solutions Inc. / Sony Marketing Inc. / TAMURA CORPORATION / TECHNO HOUSE INC. / DIGICAS LLC. / Telestream Japan GK / Tokyo Electron Device LTD / Toshiba Infrastructure Systems & Solutions Corporation / TOMOCA Electronics Co. Ltd. / Net One Systems Co., Ltd. / Panasonic Connect Co., Ltd. / HARADA CORPORATION / Panduit Corp. Japan Branch / hibino corporation / HIRAKAWA HEWTECH CORP. / Huawei Technologies Co., Ltd. / PHOTRON LIMITED / FUYOH VIDEO INDUSTRY CO.,LTD. / FOR-A Company Limited / Bosch Security Systems Ltd. / MACNICA, Inc. / MATSUDA TRADING CO.,LTD / MEDIA LINKS Co., LTD / Leader Electronics Corporation / Riedel Communications GmbH & Co. KG
- ◆ **Adviser:** Internet Initiative Japan Inc. (IIJ) / National Institute of Information and Communications Technology (NICT) / Association of Radio Industries and Businesses (ARIB) / Japan Broadcasting Corporation (NHK) / New Media magazine
- ◆ **Linking Event:** Interop Tokyo 2023 ShowNet

Participation Fee	Inter BEE 2023 Exhibitor	Inter BEE 2023 Non Exhibitor
	<b>¥110,000</b> (Tax Incl.)	<b>¥330,000</b> (Tax Incl.)

### Incidental Options

- Posting of your company logo on the official Inter BEE website and the pavilion in Makuhari Messe
- Establishment of posters and pamphlets introducing the products and solutions you are exhibiting in INTER BEE IP PAVILION (planned)

#### 〈Things Which Require Separate Arrangements and Applications〉

- Expenses relating to the loading/unloading and installation of equipment including advance preparations (including transportation expenses and personnel expenses)
- Content production costs when creating posters (the Executive Office will supply the design format)
- Inter-booth connection expenses (cable connection to your booth from the INTER BEE IP PAVILION etc.)
- Internet environment relating to the demo (line required separately on an individual basis including Wi-Fi etc.)

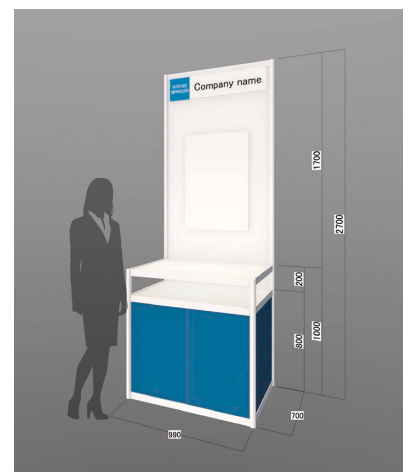
### Option: Exhibition Unit

This is a plan for participants who want to exhibit their products and solutions on an individual basis in the INTER BEE PAVILION.  
 Exhibition unit: 990 mm (frontage) x 2,700 mm (height) x 700 mm (depth)

**Option usage fee: 1 unit**

**¥110,000** (including consumption tax)

- \*You can apply for multiple units.
- \*Items included in the usage fee: Basic exhibition stand, exhibition back wall surface, sign of your company name, two outlets and electricity supply construction expenses / electricity usage fee (1 kW)
- The Executive Office will determine the booth locations within the IP PAVILION.
- The exhibition contents are limited to goods related to the IP PAVILION.
- When connecting to the Internet from this unit booth and when connecting to the actual machine connection demo, you will be required to make your own arrangements as with the normal exhibition.
- The use of this option is limited to participants in the IP Collaboration WG.



### Application Deadline: Friday, June 30, 2023

If you want to apply after this deadline, you will need to obtain the approval of the IP Collaboration WG due to the nature of the collaboration project. We will also charge you an additional fee.

### For Inquiries: Japan Electronics Show Association (JESA)

TEL:03-6212-5231 E-mail:contact2023@inter-bee.com

**www.inter-bee.com**





# INTER BEE **IP** PAVILION

Exhibition Application

Application  
Deadline

**Friday, June 30<sup>th</sup>**

Application  
Received

**To Japan Electronics Show Association**

**Email: contact2023@inter-bee.com**

Our company/organization will comply with all exhibition rules and regulations stipulated by both the Organizing Committee and Japan Electronics Show Association. In accordance with this agreement, we herewith submit the Participation in the IP Collaboration WG.

■ Please check the box if you are exhibiting or not.

If you wish to apply for options, please check the box for option and indicate the number of units desired.

Type of exhibition	Participation Fee	<input type="checkbox"/> Option	Number of Units	Total Participation Fee
<input type="checkbox"/> Inter BEE 2023 Exhibitor	<b>¥110,000</b> (Tax Incl.)	<input type="checkbox"/>		= 円
<input type="checkbox"/> Inter BEE 2023 Non Exhibitor	<b>¥330,000</b> (Tax Incl.)	<input type="checkbox"/>	<b>¥110,000</b> (Tax Incl.) × Unit	= 円

## ■ Participating Companies/Organizations

This information will appear in printed materials and on the official Inter BEE website exactly as written, so please be careful to provide accurate information.

Company Name (One letter per box, leave box empty for space)																				
Head Office Address																				
Exhibition Supervisor	Address																			
	Title/Division							Name												
	TEL							FAX												
	E-mail																			
Website URL	English																			
	Japanese																			

Personal information provided in the above section may be shared with third-party subcontractors subject to privacy policy to protect personal information, whenever necessary for providing services.  I agree to the above (check box if you agree)

**On behalf of my company, I hereby acknowledge that I have read, understood and will comply with the Inter BEE 2023 Exhibition Regulations including following cancellation fees and herewith apply to exhibit.**

Person in charge of our exhibit

Company name:

Name (please print):

Job title:

Signature: