

Broadmedia & Entertainment
Inter BEE 2024
Nov.13 Wed.▶15 Fri. Makuhari Messe

Exhibition Guide

INTER BEE CINEMA

*The latest equipment and technology specialized
for film production will be brought together.
Disseminating knowledge to pave the way
for the future of Japanese film production!*

60th
ANNIVERSARY

    #interbee2024

www.inter-bee.com



INTER BEE CINEMA

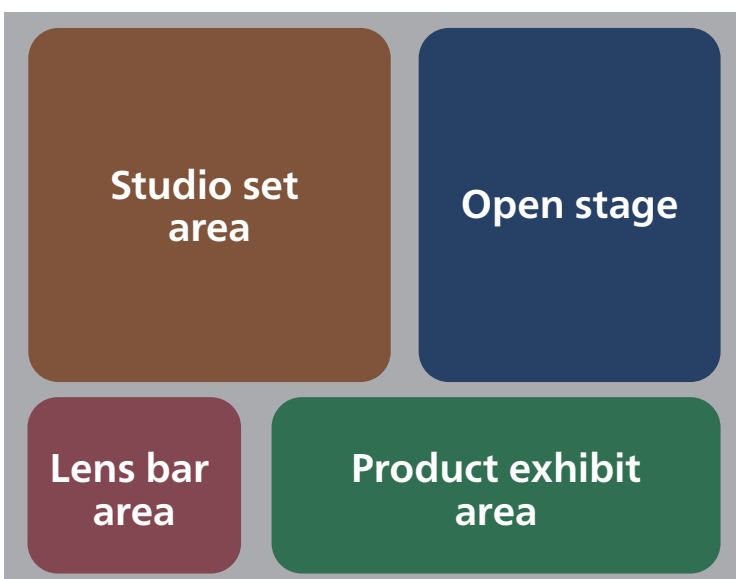
Disseminating the latest technologies and forefront of Japanese Production System!!
Approaching professionals in the film industry to create a cinema community that inspires the next generation.

INTER BEE CINEMA is a new special programme focusing specifically on film production technology, as part of its contribution to the further evolution and revitalisation of the entire video and entertainment industry on the occasion of the 60th Inter BEE. In addition to presenting the latest technology trends from the forefront of film production, the exhibition will also offer visitors the opportunity to experience filming on a studio set that recreates an actual production site. The event will create a platform for technical and product approaches and exchanges for professional visitors from all fields involved in film production, including cinematography, lighting, art and sound, as well as inspiring a new generation of content makers, including students studying film and video, and contribute to the development of the next generation who will support the future development of the Japanese film industry.

■ Visitor Target

Film directors, producers, cinematographers, cameramen, lighting technicians, sound technicians, art directors, other users involved in film production, Vocational school students and university students interested in the industry.

■ Venue composition



▶ Open stage

In addition to disseminating the latest technological trends in Japanese film production, we will hold talk sessions with professionals in the fields of cinematography, lighting, and art who are active on the front lines, as well as workshop sessions that will inspire the next generation.

▶ Studio set area

Daily filming demonstrations of the production will be held.

■ Outline

Name: INTER BEE CINEMA
Period: November 13 (Wed.) to 15 (Fri.), 2024
Venue: Makuhari Messe
Admission: Free (Registration required)

■ How to apply/Inquiry Japan Electronics Show Association

E-mail: contact2024@inter-bee.com TEL: +81-3-6212-5231 Address: 4F Ote Center Bldg., 1-1-3 Otemachi, Chiyoda-ku, Tokyo, 100-0004

Gather products and technologies related to cinema production and appeal to those in the industry!

► Product Exhibit Area

It can also be used as a hub to direct visitors to your own booth.
Exhibitor presentations can also be held on the open stage

■ Exhibit Target

- ◆ Film equipment (cameras, lighting, sound, special equipment, etc.)
- ◆ Filming site recording devices ◆ Related equipment ◆ Applications

■ Exhibition booth unit

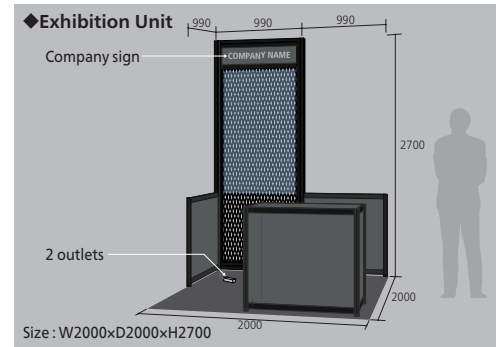
• Company sign, Exhibition stand, Electricity supply installation costs / electricity charges (1kW), 2 outlets

*If an electrical capacity of 1 kW or more is used, a charge of JPY 11,000 (incl. tax) per kW is required to pay 11,000 yen (tax included) per 1kW as additional electricity supply construction cost/electricity usage fee. *The maximum number of booths applied for is two.

■ Exhibition fee (1 unit)

Exhibitor of Inter BEE 2024: **¥132,000 (tax incl.)**

Non-Exhibitor: **¥242,000 (tax incl.)**



Possible to exhibit with fewer human resources!

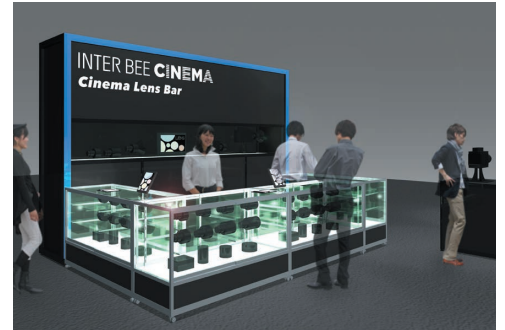
► Lens Bar Area

At the Lens Bar, where only lenses are concentrated, "Lens Meisters" will be in charge of attaching lenses to cinema cameras and providing explanations according to the requests of visitors. You can display your lenses with confidence.

■ Exhibition fee

¥99,000 (tax incl.) /1 set (5 pcs at most)

*Exhibitors are responsible for transporting, bringing in and removing their products. If you need to receive or check products, this can be done as a chargeable option.



Recreate a film set and provide users with a realistic filming experience.

► Studio Set Area

A realistic movie set with a realistic feel of the actual scene will be reproduced, and there will be a shooting demonstration and a place where visitors can experience shooting with cameras exhibited by manufacturers. Utilizing a professional studio set can maximize the allure of a product, bringing out its full potential.

■ Target

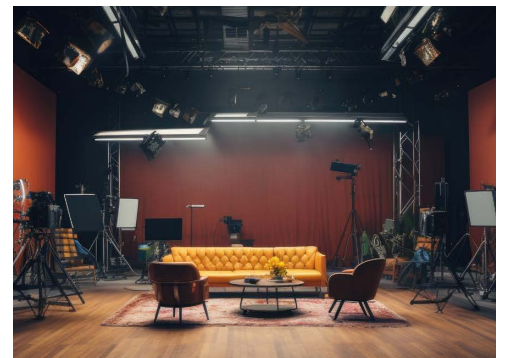
- ◆ Cinematographic cameras

■ Exhibition fee (per 1 unit)

Exhibitor of Inter BEE 2024: **¥132,000 (tax incl.)**

Non-Exhibitor: **¥242,000 (tax incl.)**

*The position of product placement and other details will be adjusted separately. Please note that multiple units might be adjusted.



■ Items included in the exhibition fee

- ◇ Exhibition Invitation (Application required.) ◇ Exhibitor badge ◇ Exhibitor presentation
- ◇ Online Exhibitor Page : available for downloading guides and listing product information and videos. It has business meeting appointment function.

■ Application Deadline: **Fri., June 28, 2024**

◇ Please transfer a payment to our designated bank account by Friday, August 30.

◇ If an exhibitor cancels or reduces the number of booth spaces applied for, regardless of the reason, designated cancellation fee will apply. Consumption tax will be added to all fees.

INTER BEE CINEMA

Exhibition Application

Application
Deadline

Friday, June 28th

Application
Received

To Japan Electronics Show Association

Email: contact2024@inter-bee.com

Our company/organization will comply with all exhibition rules and regulations stipulated by both the Organizing Committee and Japan Electronics Show Association. In accordance with this agreement, we herewith apply to the INTER BEE CINEMA.

Please enter the name of the product and brand you plan to demo.

Please check the number of days you wish to exhibit and then enter the number of units you are applying for and the exhibit fee.

*The prices are including tax.

Type of exhibition	Exhibition Fee	Number of Units	Total Exhibition Fee
<input type="checkbox"/> Product Exhibit Area	Exhibitor: ¥132,000 /unit Non-Exhibitor: ¥242,000 /unit	× unit(s)	= ¥
<input type="checkbox"/> Lens Bar Area	¥99,000 / 1 set (5 pcs at most)	× set(s)	= ¥
<input type="checkbox"/> Studio Set Area	Exhibitor: ¥132,000 /pc Non-Exhibitor: ¥242,000 /pc	× pc(s)	= ¥

Exhibitor Information (Please print using uppercase and lowercase letters, as appropriate.)

This information will appear in printed materials and on the official Inter BEE website exactly as written, so please be careful to provide accurate information.

Company Name (One letter per box, leave box empty for space)																				
Head Office Address																				
Exhibition Supervisor	Address																			
	Title/Division							Name												
	TEL							FAX												
	E-mail																			
Website URL	English																			
	Japanese																			
Privacy policy URL	English																			
	Japanese																			

Exhibitor Information will be shared between the Association and the partner companies with whom it has concluded a Memorandum of Understanding on Personal Information, only when necessary for the operation of Inter BEE and the provision of services.

I agree to the above. (Check box if you agree.)

I hereby acknowledge that I have read, understood and will comply with the Inter BEE 2024 Exhibition Regulations including following cancellation fees and herewith apply to exhibit.

I agree to the above. (Check box if you agree.)

Person in charge of our exhibit

Company name: _____

Name (Please print): _____

Job title: _____

Signature: _____

If an exhibitor cancels or reduces the number of booth spaces applied for, regardless of the reason, some or all of the following cancellation fees will apply. Consumption tax (10%) will be added to all fees.

July 1 to July 31, 2024	60% of exhibition booth fee
August 1 to August 31, 2024	80% of exhibition booth fee
After September 1, 2024	100% of exhibition booth fee